

## ◆ Various Types

Sinro series fan coil units have various specifications. You can choose ceiling concealed horizontal type, decorated vertical type, or concealed floor standing type. We can provide various options to meet your special requirements of technical parameters, air quality, operation and maintenance.

## ◆ Wide Working

Standard air volume—170~2380m<sup>3</sup>/h

Cooling capacity—0.87~14.76kw

External static pressure—0~30Pa (standard type)

30~60Pa (high static pressure type)

## ◆ Low Noise

Sinro FCU is using forward type low velocity aluminum centrifugal fan which is adjusted for dynamic and static balancing so that the fan is light weight, durable, corrosion-proof and has a stable performance.

## ◆ High Efficiency

The coil is built by expanded copper tube combined with aluminum fins. It is designed with push-out edges in double-face to create turbulence airflow for better air to fins, and increases heat exchange efficiency.

## ◆ Simple Installation

Coil pipe connection is female 3/4" BSP. The connector can be directly connected to inlet/outlet pipes.

The symmetrical design of the unit makes you can adjust the inlet/outlet pipes to the opposite side to meet on-site requirement.

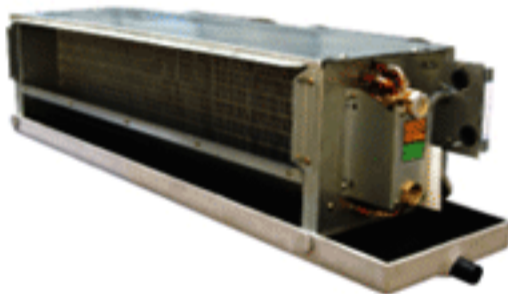
The coil can be disassembled from bottom for a more convenient cleaning and maintenance.

## ◆ Leak-proof Design

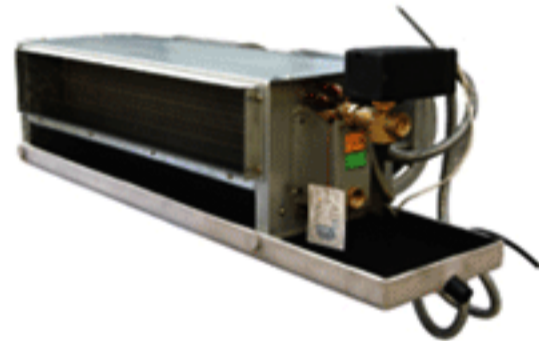
The design of water basin is to make it gradient with the unit, so as to ensure that condensation water can be drained quickly.

## Optional Parameters

- ◆ Left or right connection pipes
- ◆ Assistant electric heater (0.65~4.6w)
- ◆ High static pressure type
- ◆ Plenum and filter
- ◆ Options for water basin: lengthened type/stainless steel



Ceiling Concealed Horizontal FCU



Wireless FCU



Decorated Vertical FCU



Concealed Floor Standing FCU



## Company Introduction

GuangZhou Sinro (FoGang) Air-conditioning and cooling equipment Co., Ltd was established in 1997. This joint venture company specializes in producing terminal equipment and cooling tower for central A/C system. With a registered capital of RMB 16 million, it owns a 40,000m<sup>2</sup> factory and a testing center. The production capacity can reach RMB 200 million.

Sinro not only follows the criterion of ISO9000 Quality Management System, but also has the ability of researching and developing. At present, Sinro owns more than 10 patents in China.

Sinro products are widely used in factories, hotels, supermarkets, commercial and governmental buildings. Creating excellent air-conditioning technology and products is always Sinro's tireless pursuit.

## Product Certificate



Loyal Enterprise



ISO9001-2000



Test Report from Test Center of Architecture and Science Research Institute in China.

Test Report from Air-conditionary Equipment Quality Inspection and Test Center in China.

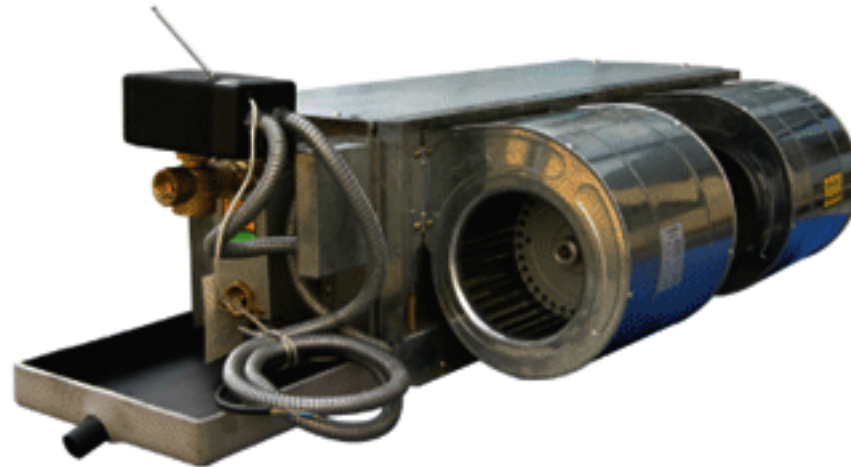


全国工业产品生产许可证

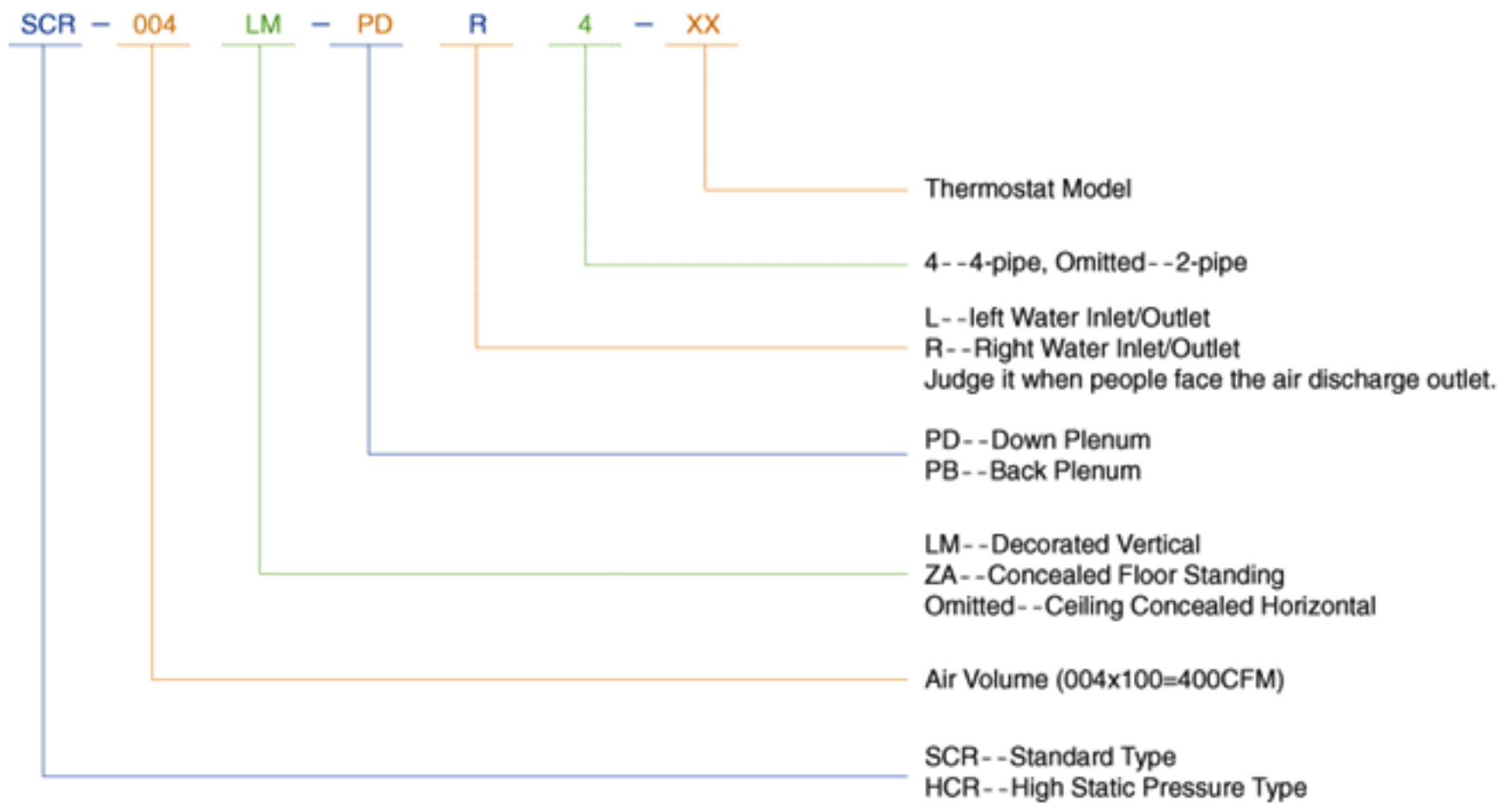
Production Licence of Industrial Products in China.



Sinro Wireless Fan Coil Unit (hereafter called WFCU) is a revolutionary product of the traditional FCU. It not only keeps benefits of traditional product, more importantly, it is **TIME-SAVING, MATERIAL-SAVING, MONEY-SAVING, and MORE RELIABLE.**



## Model Selection



Here is the comparison of time and cost in installing a traditional FCU and a WFCU.

Region	Traditional FCU		WFCU		We Are Saving	
	Installing Hours	Labor & Material Cost	Installing Hours	Labor & Material Cost	Installing Hours	Labor & Material Cost
North America	10	US \$ 500	2	US \$ 100	8	US \$ 400
South America	10	US \$ 180	2	US \$ 36	8	US \$ 144
Europe	10	US \$ 600	2	US \$ 120	8	US \$ 480
China	12	RMB 330	2	RMB 54	10	RMB 276
Hong Kong/Macau(China)	12	HK \$ 1500	2	HK \$ 350	10	HK \$ 1150

Sinro WFCU creates values for companies in different countries and regions.

### Install A WFCU



let's see the comparison of consumed material and labor in installing a traditional FCU and a WFCU

No.	Installation Process	Traditional FCU	WFCU	Equipment & Material	No.Unit	Necessary Tools & Other Material & Working Process
1	Fix a FCU over the ceiling	Required	Required	Fan coil unit	1 Set	Percussive driller, gradienter, spanner, 4 steeves. Use percussive driller and spanner to fix the 4 steeves, then connect the FCU to the steeves and adjust the FCU to horizontal line.
2	Install the connector for the motorized valve	Required	x	DN20 connector	2 pcs	Spanner, sealing medium. Screw down the connector to the FCU with sealing medium.
3	Install motorized valve	Required	x	Motorized valve	1 Set	Socket wrench. Connect the motorized valve to the connector.
4	Install inlet & outlet pipes Make heat insulation	Required	Required	Water pipes & heat insulating material	2 Set	Socket wrench, spanner. Connect the pipes to the system and wrap them in heat insulating material
5	Dig wire chase in the wall	Required	x		2 m	Hammer, chisel. Chisel a slot of 25x25x2000mm in the wall.
6	Embed wire tubes	Required	x	G20 wire pipe	2 m	Handsaw, bending fixture, packing tool. Cut and bend the tubes to suitable length, then make thread and embed them into the wall.
7	Install junction box	Required	x	Junction box	2 pcs	Slip joint pliers, 4 G20 screw caps. Connect the wire pipes to junction box.
8	Install ceiling wire tubes	Required	x	G16 wire tube	2 m	Side cutter pliers, slip joint pliers, 4 G16 connectors. Cut the pipes; fix the connectors and relative equipment.
9	Lay wire	Required	x	BVV1.5wire	28 m	Iron wire, adhesive plaster, pliers. Use iron wire to lay the wire through the pipes.
10	Testing for electrical insulation	Required	x			Ohmmeter. Test the electrical insulation between live line, neutral line and earth line.
11	Cover junction box	Required	x	Box cover	1 pcs	Screwdriver, 2 tapping screws
12	Wiring	Required	x			Screwdriver
13	Install thermostat	Required	Required	Thermostat	1 set	Screwdriver, 2 tapping screws
14	Connect to power supply	Required	x	G16 wire tube	1 m	Side cutter pliers, slip joint pliers, 2 G16 connectors, 1m RV1mmx3 wire. Cut the tubes; fix the connectors and relative equipment.
15	Recover the wall	Required	x			
16	If the wires are broken	Required	x			Repeat processes No.10-14




From the above chart, we can see it takes only 4 steps to install a WFCU, i. e. hang up the FCU; connect water pipes and wrap the insulation material; install the thermostat and plug in, compared with the 15 steps to install a traditional FCU.



## Control Module Specification

Model	Temperature Display	Pipe Pattern	Matched Controller			
			Temperature Controller Model	Signal Receiver Model	Valve	Valve Actuator
W1C012	Centigrade	2-pipe	SREW-01C	SRMW01-2C	SRV2210-20X1	
W1C014		4-pipe	SREW-01C	SRMW01-4C	SRV2210-20X2	SRA2110-220X1
W2C012		2-pipe	SREW-02C	SRMW01-2C	SRV2210-20X1	
W2C014		4-pipe	SREW-02C	SRMW01-4C	SRV2210-20X2	SRA2110-220X1
W3C012		2-pipe	SREW-03C	SRMW01-2C	SRV2210-20X1	
W3C014		4-pipe	SREW-03C	SRMW01-4C	SRV2210-20X2	SRA2110-220X1
W1F012	Fahrenheit	2-pipe	SREW-01F	SRMW01-2F	SRV2210-20X1	
W1F014		4-pipe	SREW-01F	SRMW01-4F	SRV2210-20X2	SRA2110-220X1
W2F012		2-pipe	SREW-02F	SRMW01-2F	SRV2210-20X1	
W2F014		4-pipe	SREW-02F	SRMW01-4F	SRV2210-20X2	SRA2110-220X1
W3F012		2-pipe	SREW-03F	SRMW01-2F	SRV2210-20X1	
W3F014		4-pipe	SREW-03F	SRMW01-4F	SRV2210-20X2	SRA2110-220X1
W1C112	Centigrade	2-pipe	SREW-01C	SRMW11-2C	SRV2210-20X1	SRA2110-220X1
W1C114		4-pipe	SREW-01C	SRMW11-4C	SRV2210-20X2	SRA2110-220X2
W2C112		2-pipe	SREW-02C	SRMW11-2C	SRV2210-20X1	SRA2110-220X1
W2C114		4-pipe	SREW-02C	SRMW11-4C	SRV2210-20X2	SRA2110-220X2
W3C112		2-pipe	SREW-03C	SRMW11-2C	SRV2210-20X1	SRA2110-220X1
W3C114		4-pipe	SREW-03C	SRMW11-4C	SRV2210-20X2	SRA2110-220X2
W1F112	Fahrenheit	2-pipe	SREW-01F	SRMW11-2F	SRV2210-20X1	SRA2110-220X1
W1F114		4-pipe	SREW-01F	SRMW11-4F	SRV2210-20X2	SRA2110-220X2
W2F112		2-pipe	SREW-02F	SRMW11-2F	SRV2210-20X1	SRA2110-220X1
W2F114		4-pipe	SREW-02F	SRMW11-4F	SRV2210-20X2	SRA2110-220X2
W3F112		2-pipe	SREW-03F	SRMW11-2F	SRV2210-20X1	SRA2110-220X1
W3F114		4-pipe	SREW-03F	SRMW11-4F	SRV2210-20X2	SRA2110-220X2

## Wireless Thermostat

Model	SREW-01C	SREW-01F	SREW-02C	SREW-02F	SREW-03C	SREW-03F
Outline						
Control Switch	Three-speed Switch		Cool-Heat			
Control Range	16 ~ 28℃	60 ~ 82℃	High-Medium-Low-Automatic			
Display Range	0 ~ 40℃	32 ~ 99℃	16 ~ 28℃	60 ~ 82℃	16 ~ 28℃	60 ~ 82℃
Temperature Display	Centigrade	Fahrenheit	Centigrade	Fahrenheit	Centigrade	Fahrenheit
Display Precision	≤ 0.5℃					
Power Supply	2 X AAA Battery					
Communication Pattern	RF315MHz or 433MHz					
Remote Effective Distance	10M					
Shell Material	ABS					
Working Ambient Temperature	0 ~ 50℃					
Storage Temperature	0 ~ 60℃					



Signal Control & Actuator Module	SRMW01-2C	SRMW01-2F	SRMW01-4C	SRMW01-4F
Pipe Pattern	2-pipe		4-pipe	
Temperature Display	Centigrade	Fahrenheit	Centigrade	Fahrenheit
Power Supply	AC220V/50Hz ± 10%			
Actuator Power	6W			
Control Precision	± 0.5℃			
Working Ambient Temperature	0 ~ 50℃			
Storage Temperature	0 ~ 60℃			
Attached Accessory	With Temperature Sensor & 1.5mm Wire			



Valve	SRV2210-15	SRV2210-20	SRV2210-25	SRV2210-32
Size	15	20	25	32
Closing-off Pressure(MPa)	0.4	0.4	0.1	0.1
Kv	3.8	3.8	4.6	10
Valve Body Pressure(MPa)	1.6			



Signal Control & Actuator Module	SRMW11-2C	SRMW11-2F	SRMW11-4C	SRMW11-4F
Pipe Pattern	2-pipe		4-pipe	
Temperature Display	Centigrade	Fahrenheit	Centigrade	Fahrenheit
Power Supply	AC220V/50Hz ± 10%			
Actuator Power	6W			
Control Precision	± 0.5℃			
Working Ambient Temperature	0 ~ 50℃			
Storage Temperature	0 ~ 60℃			
Attached Accessory	With Temperature Sensor			



## Motorized Valve Model (Normal-CloseType)

Model	Size	Kv	Closing-off Pressure	Valve Body Pressure
SR012W1220	15	2.0	0.2	2.5 AC220V/50-60Hz ± 10%
SR012W1232	15	3.2	0.15	
SR012W3420	20	2.0	0.2	
SR012W3432	20	3.2	0.15	
SR012W1168	25	6.8	0.08	2.5 AC220V/50-60Hz ± 10%
SR02GC21520A4	15	2.0	0.25	
SR02GC21532A4	15	3.2	0.2	
SR02GC22032A4	20	3.2	0.2	
SR02GC22046A4	20	4.6	0.15	2.5 AC220V/50-60Hz ± 10%
SR02GC22557A4	25	5.7	0.1	
SR02GC22568A4	25	6.8	0.08	1.6 AC220V/50-60Hz ± 10%
SRA2100-220/SRV2200-15	15	1.5	0.25	
SRA2100-220/SRV2200-20	20	3.5	0.1	
SRA2100-220/SRV2200-25	25	4.8	0.06	
SRA2100-220/SRV2210-15	15	2	0.3	1.6 AC220V/50-60Hz ± 10%
SRA2100-220/SRV2210-20	20	2.8	0.15	
SRA2100-220/SRV2210-25	25	4.6	0.12	
SRA2100-220/SRV2210-32	32	10	0.1	
SR04GC21520A4	15	2	0.2	2.1 AC220V/50-60Hz ± 10%
SR04GC22032A4	20	3.2	0.15	
SR04GC22557A4	25	5.7	0.1	



## Performance Parameter List

Performance	Model	002	003	004	005	006	008	010	012	014
Rated Air Volume (m <sup>3</sup> /h)	H	340	510	680	850	1020	1360	1700	2040	2380
	M	255	383	510	638	765	1020	1275	1530	1785
	L	170	255	340	425	510	680	850	1020	1190
Cooling Capacity (W)	1-Row	800	1110	1750	2250	2500	3020	3740	4680	5480
	2-Row	1620	2220	3000	3780	4290	5260	6580	8170	9570
	3-Row	2140	2890	4010	4880	5740	7540	9300	11410	13310
	4-Row	2430	3430	4760	6030	6870	9180	10820	13290	15530
Heating Capacity (W)	1-Row	1480	1940	2790	3300	3780	5000	6030	7240	8280
	2-Row	2530	3390	4770	5670	6550	8680	10520	12630	14340
	3-Row	3170	4220	6040	7230	8400	11210	13960	16730	19240
	4-Row	3730	5190	7180	8870	10140	13410	16460	19750	22760
Electrical Header (KW) (Optional)		1-1.2	1-2	1-2	1.5-2.5	1.5-3	3-3.5	2-4	2.5-4.5	3-5
Input power (W)	12Pa 2-Pipe	37	52	62	76	96	134	152	189	228
	12Pa 4-Pipe	44	59	72	87	108	156	174	212	253
	30Pa 2-Pipe	44	59	72	87	108	156	174	212	253
	30Pa 4-Pipe	49	66	84	100	118	174	210	250	300
Noise Level dB(A)	12Pa	37	39	41	43	45	46	48	50	52
	30Pa	40	42	44	46	47	48	50	52	54
Water flow l/s	1-Row	0.14	0.19	0.3	0.39	0.43	0.52	0.64	0.8	0.94
	2-Row	0.28	0.38	0.52	0.65	0.74	0.9	1.13	1.4	1.65
	3-Row	0.37	0.5	0.69	0.84	0.99	1.3	1.6	1.96	2.29
	4-Row	0.42	0.59	0.82	1.04	1.18	1.58	1.86	2.29	2.67
Water pressure Loss(kPa)		30	30	30	30	40	40	40	40	50

### Remarks:

- For the standard type, the rated air volume is the value tested under an external static pressure of 12Pa.  
For the high static pressure type, it is the value tested under an external static pressure of 30Pa.
- If model not indicating 2-pipe or 4-pipe means it makes no difference.
- Facing air outlet of FCU, if the connecting on the left means it is Left handing ,and vice versa.
- Fan Type:Multi-blade centrifugal fan.
- Motor Type: Capacitor motor, Single phase 220V, 50HZ, Isolated voltage AC1000V/min, Ball bearing(Free from lubricant).
- Coil: Copper pipe,Aluminium fins, cross-exchanger coil, working resistant pressure 16Kg/cm<sup>2</sup>.
- Piping Type: Coil pipe3/40BSP,Pipe for water basing is 3/40BSP.

### Optional Parts:

- Wireless remoted control
  - Hydrophile fins
  - 25Kg/cm<sup>2</sup> pressure resistant coil
  - Pipe connection and air outlet direction
  - Electric heater (0.65-4.6 Kw)
  - Down plenum or back plenum
  - Extended type drain tray
  - Stainless steel drain tray
  - Class Zero fire resisatant polythene foam (Special for export)
  - Aluminium filter/nylon filter
- Sinro company retains the right to renew the design of Fan Coil Unit without prior notice.

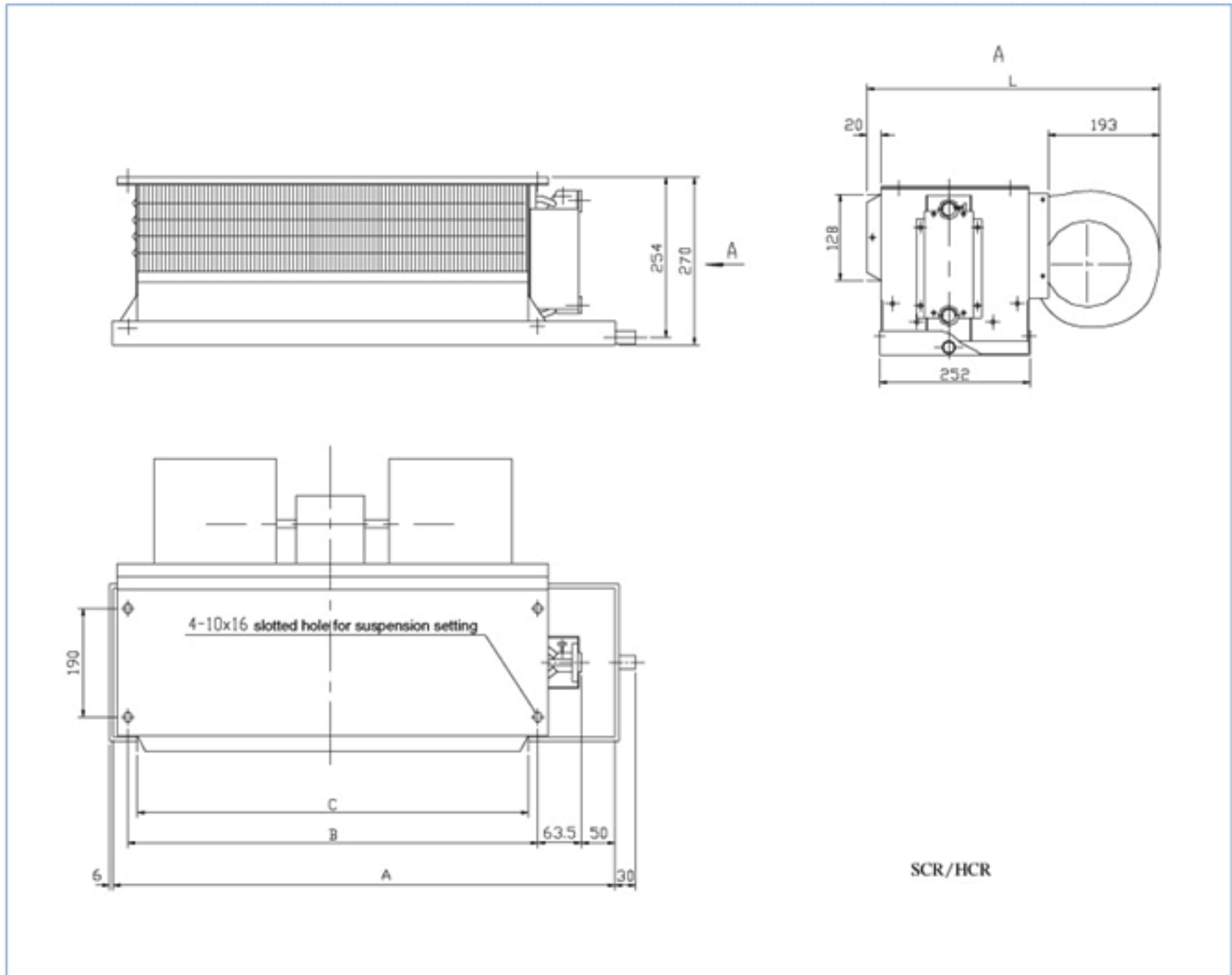


Fan Speed	Model	Octave Band Sound Pressure Level (dB)							
		63	125	250	500	1000	2000	4000	8000
H	SCR-002	31	40	37	35	31	32	20	15
	SCR-003	34	40	38	34	37	33	24	18
	SCR-004	32	38	34	33	36	31	24	20
	SCR-005	34	44	41	38	36	34	23	18
	SCR-006	37	46	44	39	41	38	28	21
	SCR-008	37	49	46	41	41	41	33	25
	SCR-010	39	49	47	46	41	39	32	26
	SCR-012	39	48	44	42	46	40	32	25
	SCR-014	39	50	47	45	48	43	35	28
M	SCR-002	29	33	31	30	25	24	14	14
	SCR-003	35	34	35	33	31	25	18	15
	SCR-004	38	37	30	27	28	24	22	20
	SCR-005	30	37	36	31	32	26	20	15
	SCR-006	33	41	37	32	34	30	20	15
	SCR-008	34	44	41	35	35	36	25	17
	SCR-010	38	43	41	40	36	31	22	17
	SCR-012	33	42	38	36	39	32	25	21
	SCR-014	34	43	42	39	37	33	26	21

Fan Speed	Model	Octave Band Sound Pressure Level (dB)							
		63	125	250	500	1000	2000	4000	8000
H	HCR-002	34	41	37	33	37	32	24	17
	HCR-003	37	44	41	37	36	35	26	18
	HCR-004	35	43	38	36	40	33	26	21
	HCR-005	37	46	43	37	43	37	27	19
	HCR-006	38	49	47	41	41	40	30	24
	HCR-008	37	49	47	40	42	42	35	27
	HCR-010	43	51	49	48	43	42	34	28
	HCR-012	39	51	48	44	47	41	33	26
	HCR-014	41	52	49	45	49	44	37	31
M	HCR-002	32	36	32	26	29	24	19	18
	HCR-003	33	38	36	31	32	29	18	15
	HCR-004	32	42	35	31	31	26	23	20
	HCR-005	32	39	37	34	34	29	20	15
	HCR-006	34	43	40	34	37	32	22	17
	HCR-008	34	46	42	35	36	37	26	19
	HCR-010	39	44	42	41	37	35	25	20
	HCR-012	34	46	42	40	40	34	27	21
	HCR-014	37	48	46	43	42	37	30	23

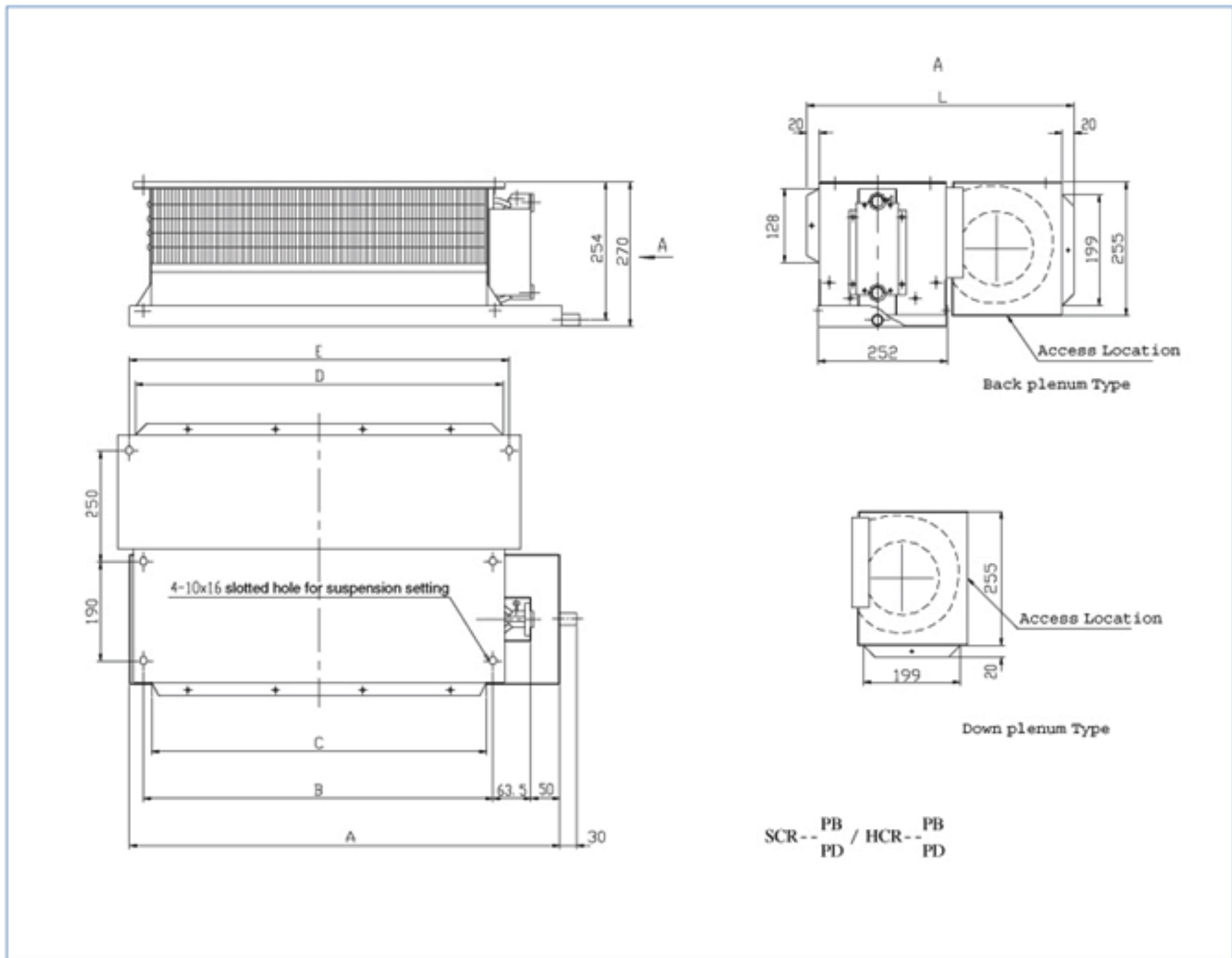


## Ceiling Concealed Horizontal FCU Dimension



Model	Outline Dimension					Quantity		Weight	
	L		A	B	C	Fan	Motor	2-Pipe	4-Pipe
	2-Pipe	4-Pipe							
SCR/HCR - 002	491	491	603	445	415	1	1	18	22
SCR/HCR - 003	491	491	650	492	462	1	1	21	25
SCR/HCR - 004	491	491	900	742	712	2	1	23	28
SCR/HCR - 005	491	491	965	807	777	2	1	25	32
SCR/HCR - 006	491	491	1035	877	847	2	1	27	34
SCR/HCR - 008	491	491	1320	1162	1132	2	1	38	47
SCR/HCR - 010	491	491	1490	1332	1302	3	2	40	50
SCR/HCR - 012	491	491	1740	1582	1552	4	2	42	53
SCR/HCR - 014	491	491	1920	1762	1732	4	2	48	60

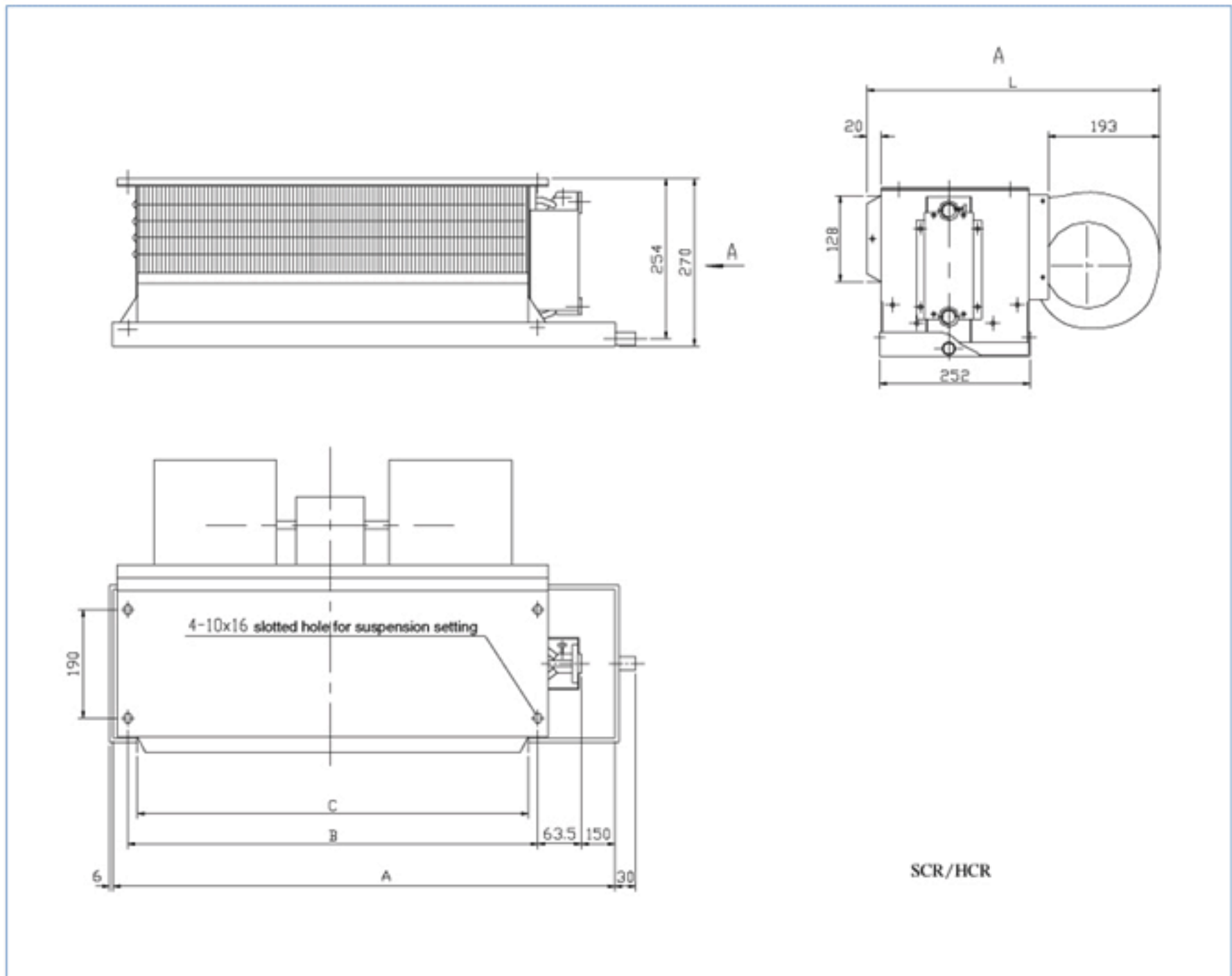
## Ceiling Concealed Horizontal FCU(With Plenum) Dimension



Model	Outline Dimension							Quantity		Weight	
	L		A	B	C	D	E	Fan	Motor	2-Pipe	4-Pipe
	2-Pipe	4-Pipe									
SCR/HCR - 002	576	576	603	445	415	419	505	1	1	18	22
SCR/HCR - 003	576	576	650	492	462	466	552	1	1	21	25
SCR/HCR - 004	576	576	900	742	712	716	802	2	1	23	28
SCR/HCR - 005	576	576	965	807	777	781	867	2	1	25	32
SCR/HCR - 006	576	576	1035	877	847	851	937	2	1	27	34
SCR/HCR - 008	576	576	1320	1162	1132	1136	1222	2	1	38	47
SCR/HCR - 010	576	576	1490	1332	1302	1306	1392	3	2	40	50
SCR/HCR - 012	576	576	1740	1582	1552	1556	1642	4	2	42	53
SCR/HCR - 014	576	576	1920	1762	1732	1736	1822	4	2	48	60

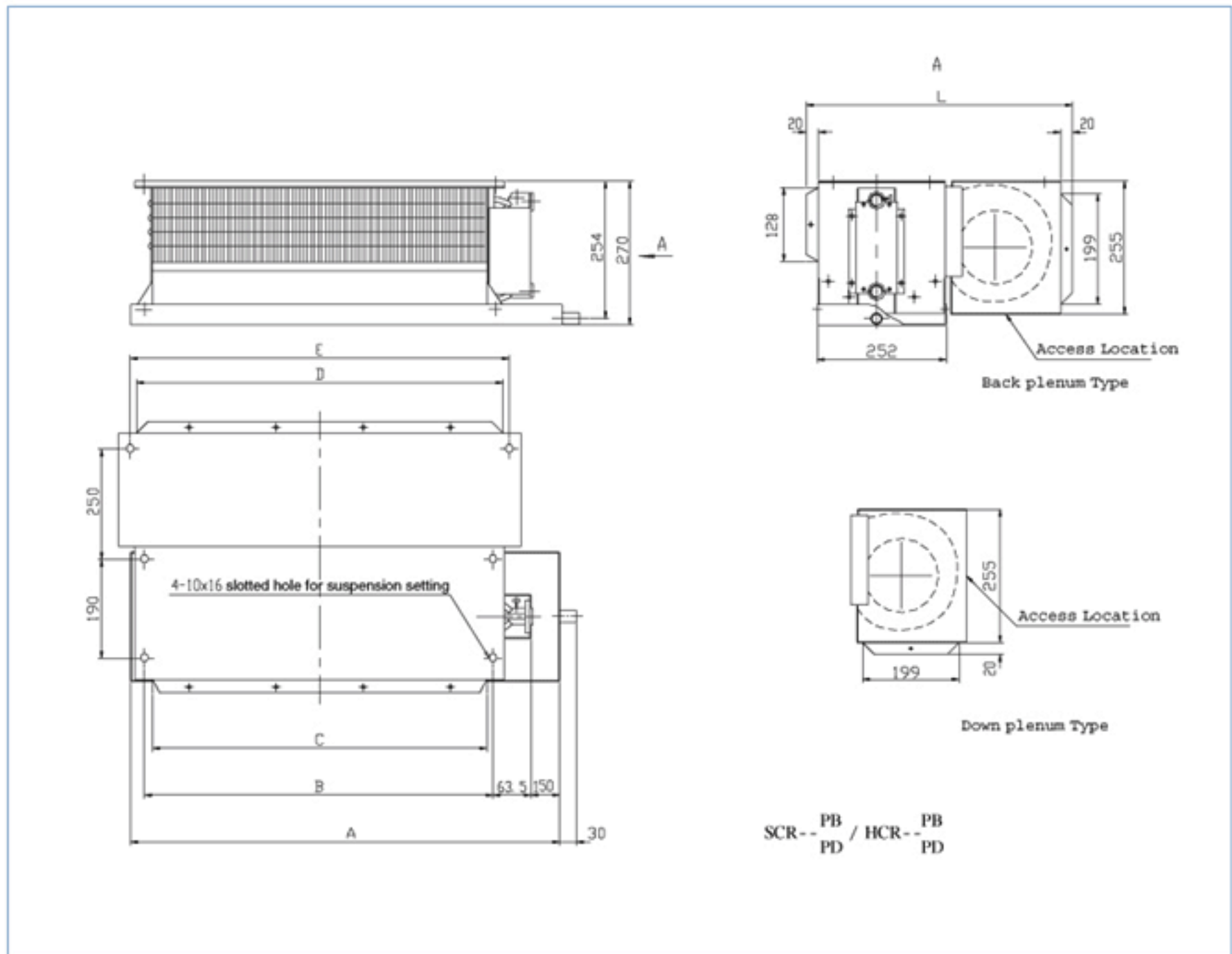


## Ceiling Concealed Horizontal WFCU Dimension



Model	Outline Dimension					Quantity		Weight	
	L		A	B	C	Fan	Motor	2-Pipe	4-Pipe
	2-Pipe	4-Pipe							
SCR/HCR - 002	491	491	703	445	415	1	1	19	23
SCR/HCR - 003	491	491	750	492	462	1	1	22	26
SCR/HCR - 004	491	491	1000	742	712	2	1	24	29
SCR/HCR - 005	491	491	1065	807	777	2	1	26	33
SCR/HCR - 006	491	491	1135	877	847	2	1	28	35
SCR/HCR - 008	491	491	1420	1162	1132	2	1	39	48
SCR/HCR - 010	491	491	1590	1332	1302	3	2	41	51
SCR/HCR - 012	491	491	1840	1582	1552	4	2	43	54
SCR/HCR - 014	491	491	2020	1762	1732	4	2	49	61

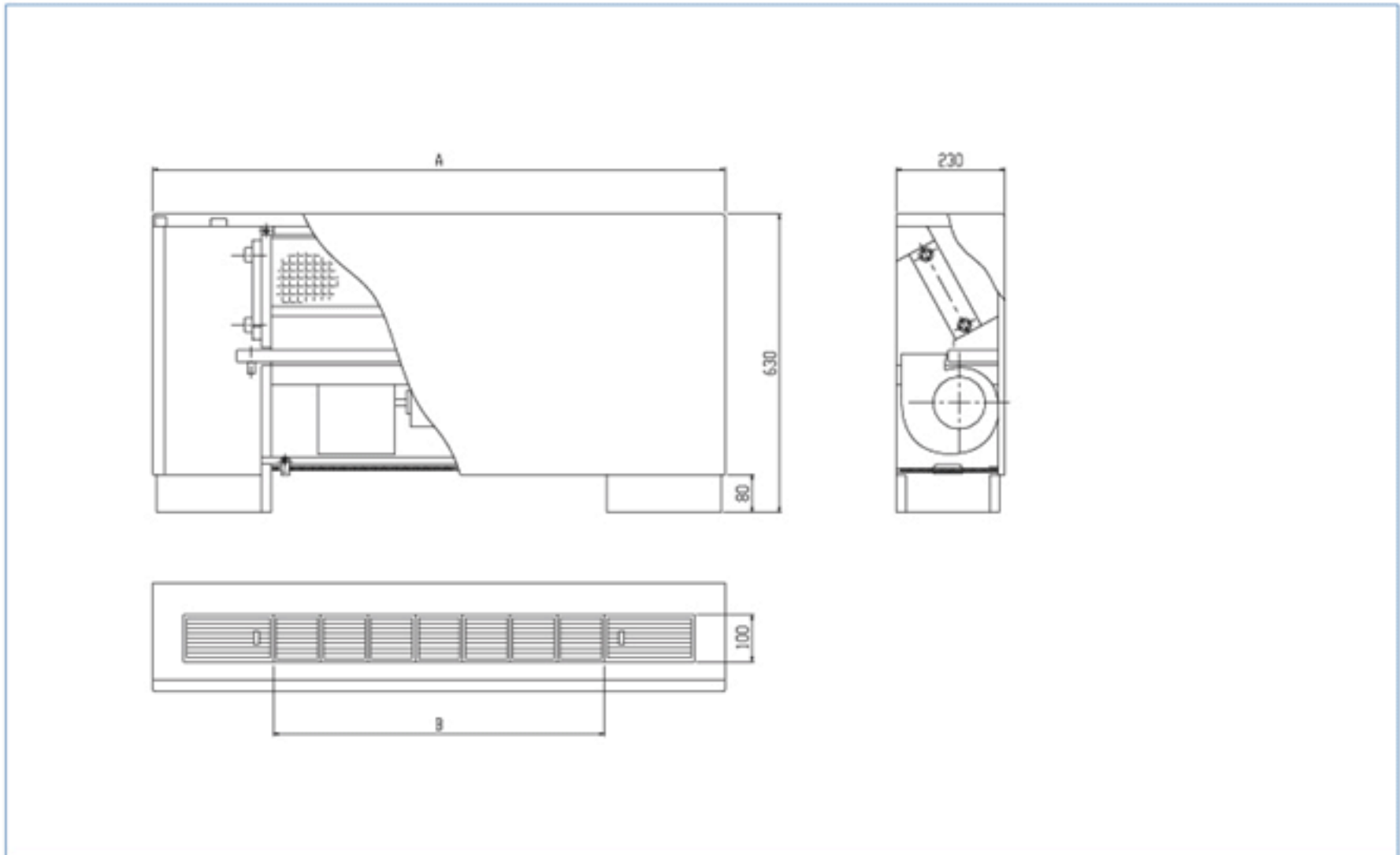
## Ceiling Concealed Horizontal WFCU(With Plenum) Dimension



Model	Outline Dimension						Quantity		Weight		
	L		A	B	C	D	E	Fan	Motor	2-Pipe	4-Pipe
	2-Pipe	4-Pipe									
SCR/HCR - 002	576	576	703	445	415	419	505	1	1	19	23
SCR/HCR - 003	576	576	750	492	462	466	552	1	1	22	26
SCR/HCR - 004	576	576	1000	742	712	716	802	2	1	24	29
SCR/HCR - 005	576	576	1650	807	777	781	867	2	1	26	33
SCR/HCR - 006	576	576	1135	877	847	851	937	2	1	28	35
SCR/HCR - 008	576	576	1420	1162	1132	1136	1222	2	1	39	48
SCR/HCR - 010	576	576	1590	1332	1302	1306	1392	3	2	41	51
SCR/HCR - 012	576	576	1840	1582	1552	1556	1642	4	2	43	54
SCR/HCR - 014	576	576	2020	1762	1732	1736	1822	4	2	49	61

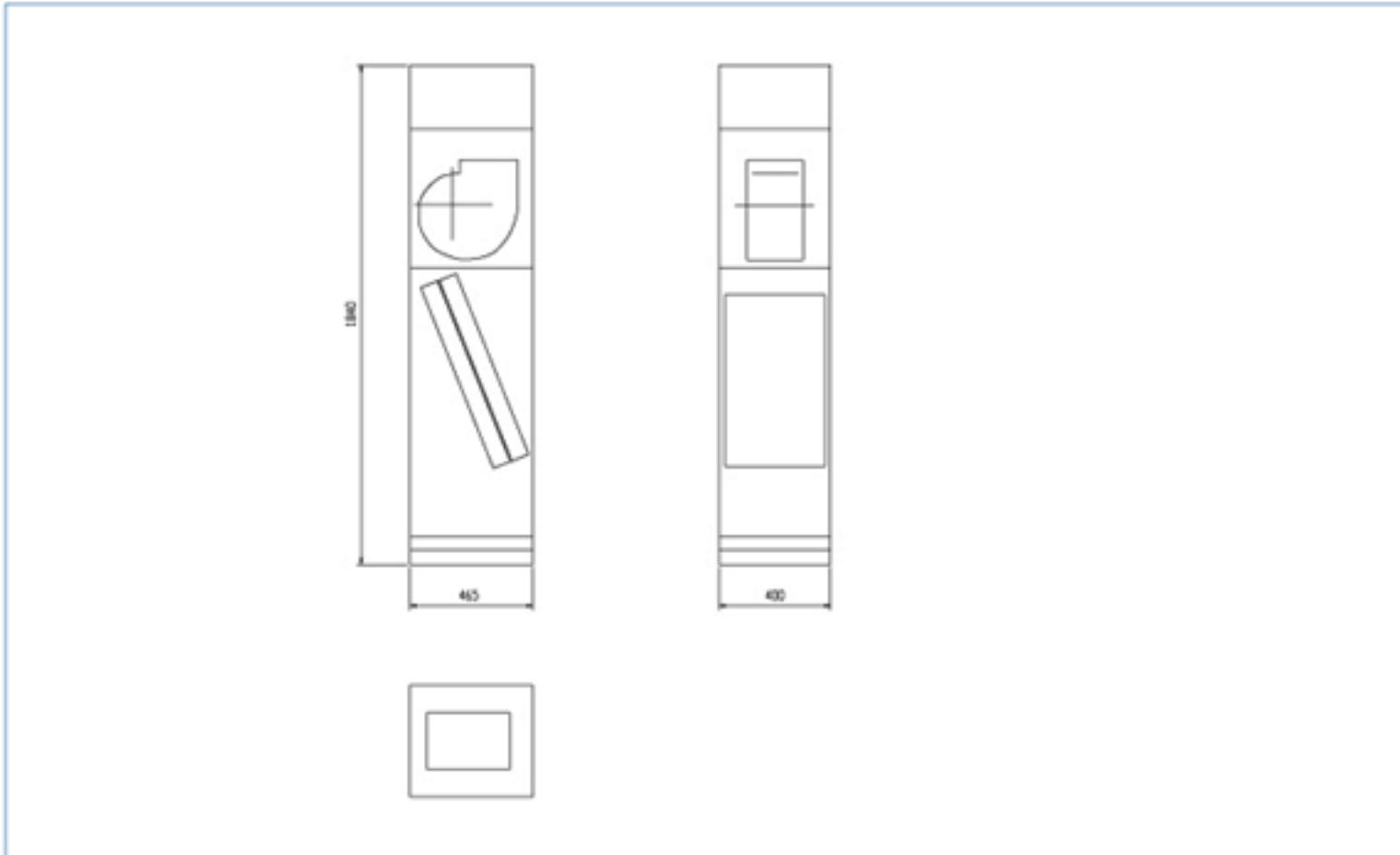


## Decorated Vertical FCU Dimension



Model	Outline Dimension		Quantity		Weight
	A	B	Fan	Motor	
SCR/HCR - 002LM	970	500	1	1	34
SCR/HCR - 003LM	1120	600	1	1	38
SCR/HCR - 004LM	1220	700	2	1	38
SCR/HCR - 005LM	1360	900	2	1	46
SCR/HCR - 006LM	1440	900	2	1	50
SCR/HCR - 008LM	1740	1200	2	1	62
SCR/HCR - 010LM	1800	1300	3	2	66
SCR/HCR - 012LM	1940	1400	4	2	70
SCR/HCR - 014LM	2200	1700	4	2	75

## Concealed Floor Standing FCU Dimensions



Model	Quantity		Weight
	Fan	Motor	
SCR/HCR - 004ZA	1	1	73
SCR/HCR - 006ZA	1	1	81
SCR/HCR - 008ZA	1	1	90
SCR/HCR - 004ZA-4	1	1	80
SCR/HCR - 006ZA-4	1	1	89
SCR/HCR - 008ZA-4	1	1	101

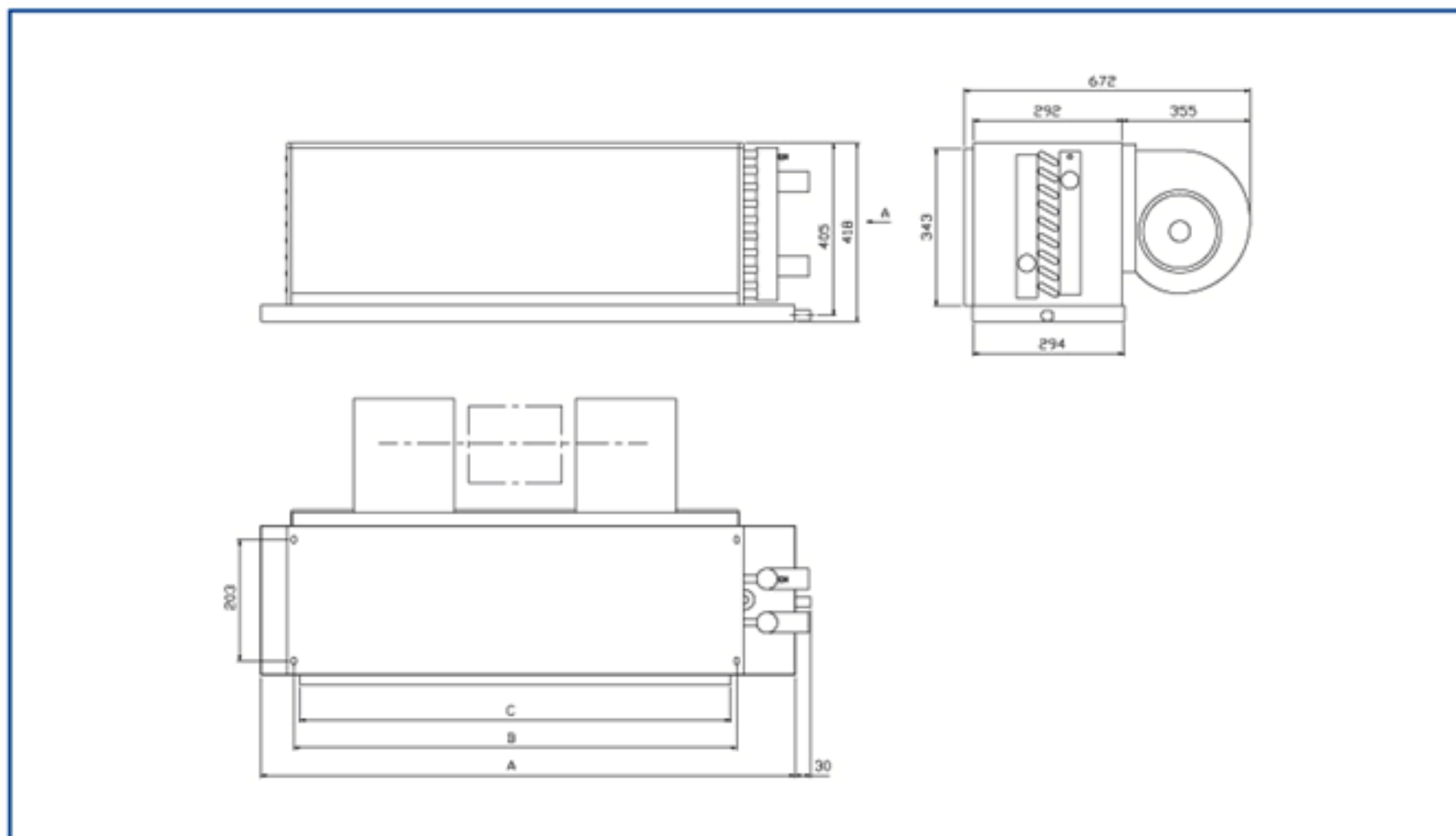


Performance		Model	008	010	012	016	018	020	022	028	034
Rated Air Volume (m <sup>3</sup> /h)	H		1540	1760	2100	2720	3080	3400	3800	4600	5650
	M		1155	1320	1575	2040	2310	2550	2850	3450	4238
	L		770	880	1050	1360	1540	1700	1900	2300	2825
Cooling Capacity(KW) 27/19.5°C air on temperature	3 Row	Total heating/cooling capacity KW	8.0	8.1	10.2	14.2	16.5	18.4	20.9	23.3	29.6
		Sensible cooling capacity KW	5.3	5.7	7.1	9.6	11.0	12.2	13.8	15.4	19.9
		Water flow l/s	0.4	0.4	0.5	0.7	0.8	0.9	1.0	1.1	1.4
		Water resistance kPa	38	9	14	24	31	38	18	17	26
	4 Row	Total heating/cooling capacity KW	9.4	10.3	12.8	17.3	18.0	20.3	23.3	29.1	36.8
		Sensible cooling capacity KW	6.3	7.0	8.6	11.4	12.4	13.8	15.6	19.2	24.1
		Water flow l/s	0.5	0.5	0.6	0.8	0.9	1.0	1.1	1.4	1.8
		Water resistance kPa	32	14	20	27	11	13	17	25	38
	6 Row	Total heating/cooling capacity KW	11.7	13.8	16.9	20.8	23.9	26.6	30.2	35.7	44.8
		Sensible cooling capacity KW	7.6	8.9	10.8	13.6	15.5	17.2	19.4	23.2	28.8
		Water flow l/s	0.6	0.7	0.8	1.0	1.1	1.3	1.4	1.7	2.1
		Water resistance kPa	23	30	43	14	18	22	28	18	27
Cooling Capacity(KW) 33/27°C air on temperature	3 Row	Total heating/cooling capacity KW	15.1	18.2	22.6	27.7	32.2	36	41.1	48.3	60.9
		Sensible cooling capacity KW	6.0	7.2	8.9	11.1	12.8	14.3	16.2	19.2	24.0
		Water flow l/s	0.7	0.9	1.1	1.3	1.5	1.7	2.0	2.3	2.9
		Water resistance kPa	27	37	50	23	30	37	47	33	45
	4 Row	Total heating/cooling capacity KW	18.8	22.4	24.7	34.2	39.4	43.9	46.1	59.0	72.8
		Sensible cooling capacity KW	7.5	8.9	10.0	13.7	15.8	17.5	15.6	23.6	29.1
		Water flow l/s	0.9	1.1	1.2	1.6	1.9	2.1	2.2	2.8	3.5
		Water resistance kPa	39	50	20	33	43	50	22	46	49
	6 Row	Total heating/cooling capacity KW	21.5	25.7	31.6	42.6	48.7	52.2	59.0	68.7	86.5
		Sensible cooling capacity KW	8.8	10.5	12.9	17.4	19.8	21.3	24.1	28.1	35.3
		Water flow l/s	1.0	1.2	1.5	2.0	2.3	2.5	2.8	3.3	4.1
		Water resistance kPa	15	20	29	49	50	34	43	42	32
Heating Capacity (KW)	3 Row		11.8	12.3	15.6	18.7	22.1	23.0	26.3	34.9	41.1
	4 Row		16.1	17.8	19.7	23.8	27.4	28.6	31.0	43.1	51.8
	5 Row		19.7	20.9	25.2	30.3	35.4	37.2	41.3	54.7	63.8
Noise Level dB (A)	50Pa		50	52	54	56	57	58	59	60	61
Fan	Type	Centrifugal Forward									
	Dimension (mm)	200									
	Quantity	1	1	1	1	2	2	2	2	2	2
Motor	Power supply	220V/1PH/50Hz									
	Quantity	1	1	1	1	1	1	1	1	1	1
	Power(W)	350	400	480	620	700	780	870	1050	1300	
Coil	Type	Copper Tube and Aluminium Fin									
	Water inlet/outlet connection (IN)	1"	1"	1"	1"	1 1/2"	1 1/2"	1 1/2"	1 1/2"	1 1/2"	

Notes: 1. The water in/out temperature: Cooling:7/12°C; Heating coil water in temperature:60°C;  
2. Standard rated air volume is designed according to 50Pa external pressure.

Fan Speed	Model	Octave Band Sound Pressure Level (Db)							
		63	125	250	500	1000	2000	4000	8000
H	HCR-008-DC	40	52	49	43	45	45	38	31
	HCR-010-DC	45	54	49	47	49	44	37	31
	HCR-012-DC	42	51	54	47	50	44	36	29
	HCR-016-DC	46	52	54	49	51	47	41	38
	HCR-018-DC	48	53	54	50	52	48	45	40
	HCR-020-DC	50	57	55	51	52	49	46	42
	HCR-022-DC	59	60	55	54	53	53	49	43
	HCR-028-DC	61	62	61	53	54	53	48	45
	HCR-034-DC	58	61	56	54	56	56	52	46

## Large Air Volume FCU Dimension



Model	Outline Dimension			Quantity		Weight
	A	B	C	Fan	Motor	
HCR - 008-DC	711	559	483	1	1	25
HCR - 010-DC	812	660	584	1	1	32
HCR - 012-DC	939	787	711	1	1	41
HCR - 016-DC	1193	1041	965	1	1	51
HCR - 018-DC	1320	1168	1092	2	1	57
HCR - 020-DC	1442	1290	1194	2	1	62
HCR - 022-DC	1568	1416	1340	2	1	69
HCR - 028-DC	1848	1696	1620	2	1	83
HCR - 034-DC	2218	2066	1990	2	1	101



# SINRO®

## WIRELESS FAN COIL UNITS

# SINRO®

GuangZhou Sinro (FoGang) Air-conditioning and cooling equipment Co., Ltd

Add: 5F-6F.,12th Jianzhong Road,Guangzhou, P. R. C.

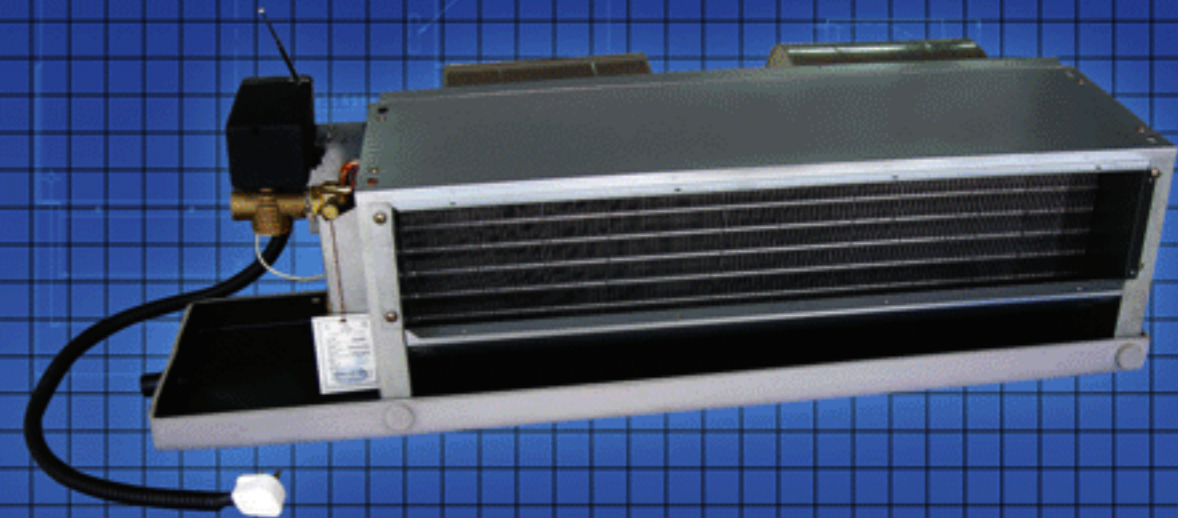
Tel: (8620) 83936008 (30lines)

Fax: (8620) 85528437

Postcode: 510665

Http: //www.sinro.com

E-mail: marketing@sinro.com



# 80%

### MONEY-SAVING

- TIME-SAVING
- LABOR-SAVING
- MATERIAL-SAVING

